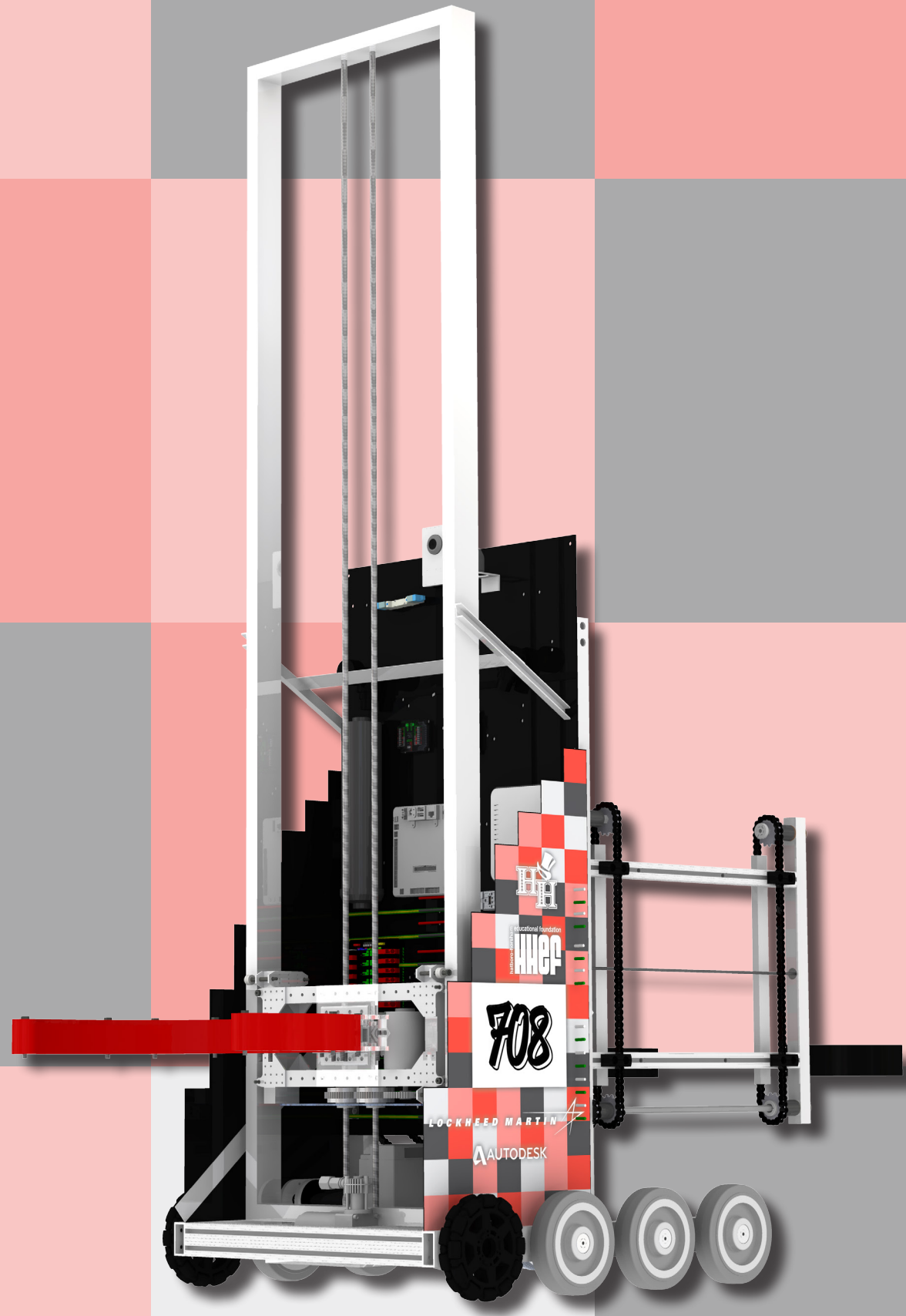
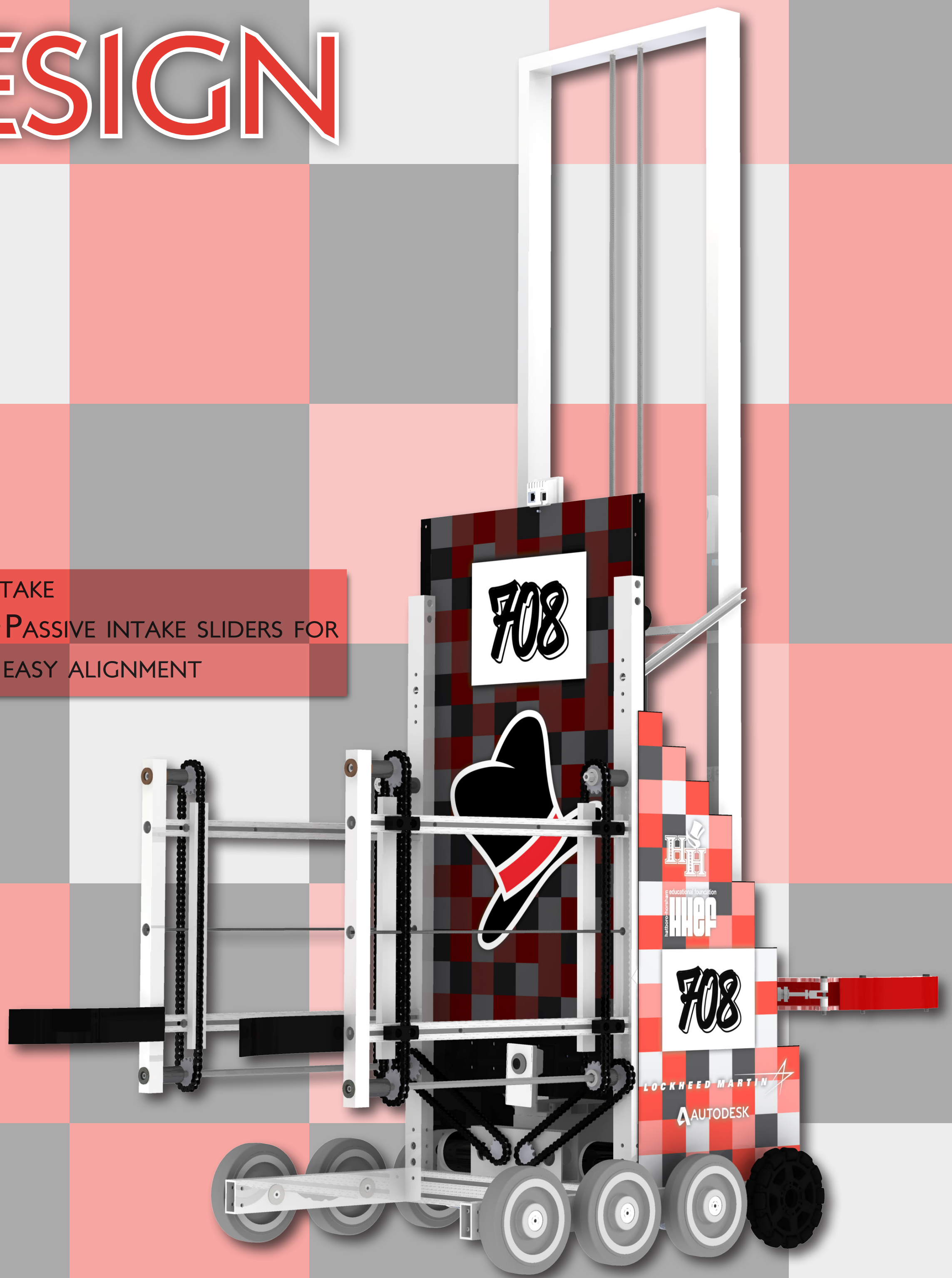
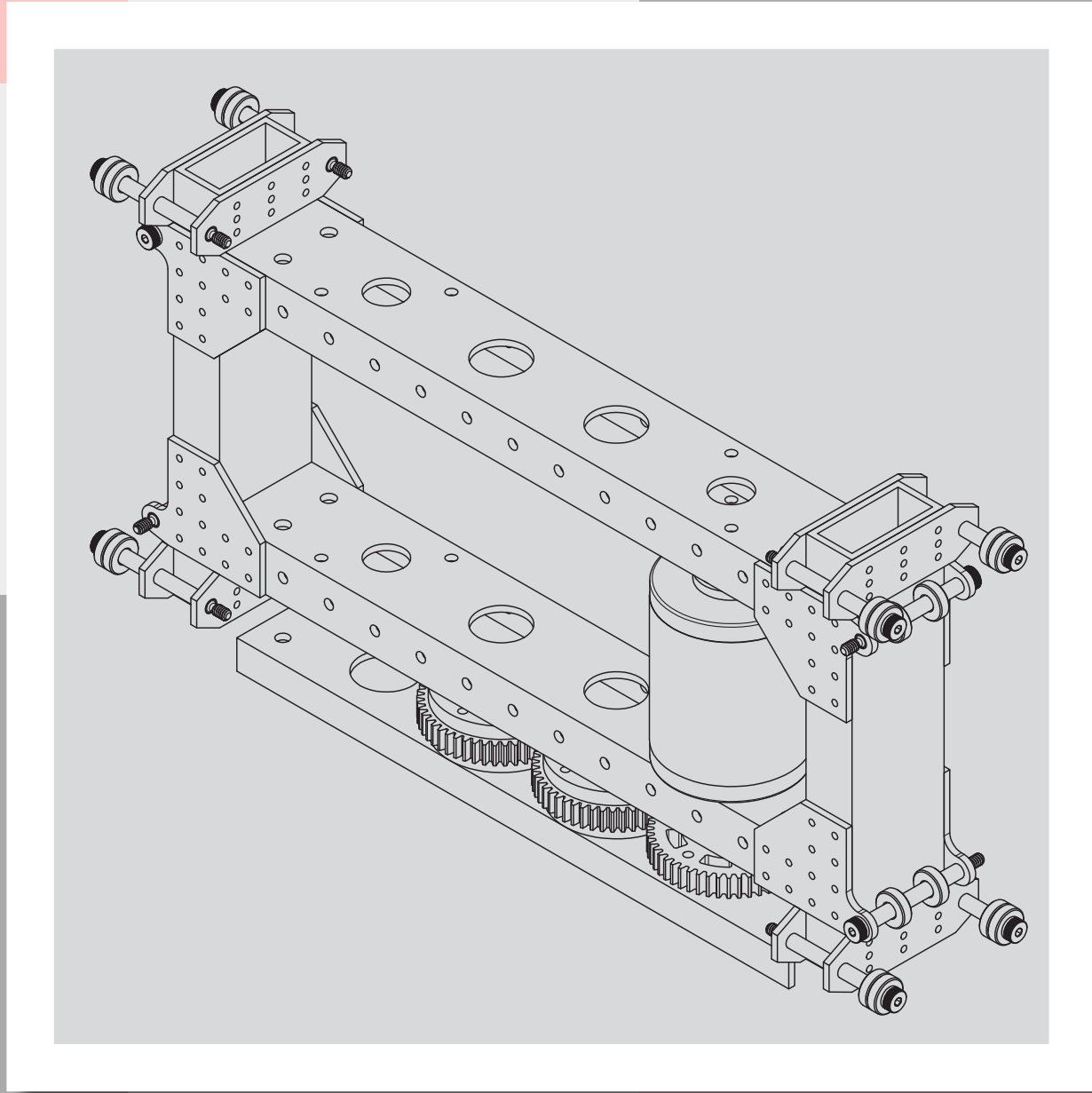


# ROBOT DESIGN



## INTAKE

- PASSIVE INTAKE SLIDERS FOR EASY ALIGNMENT

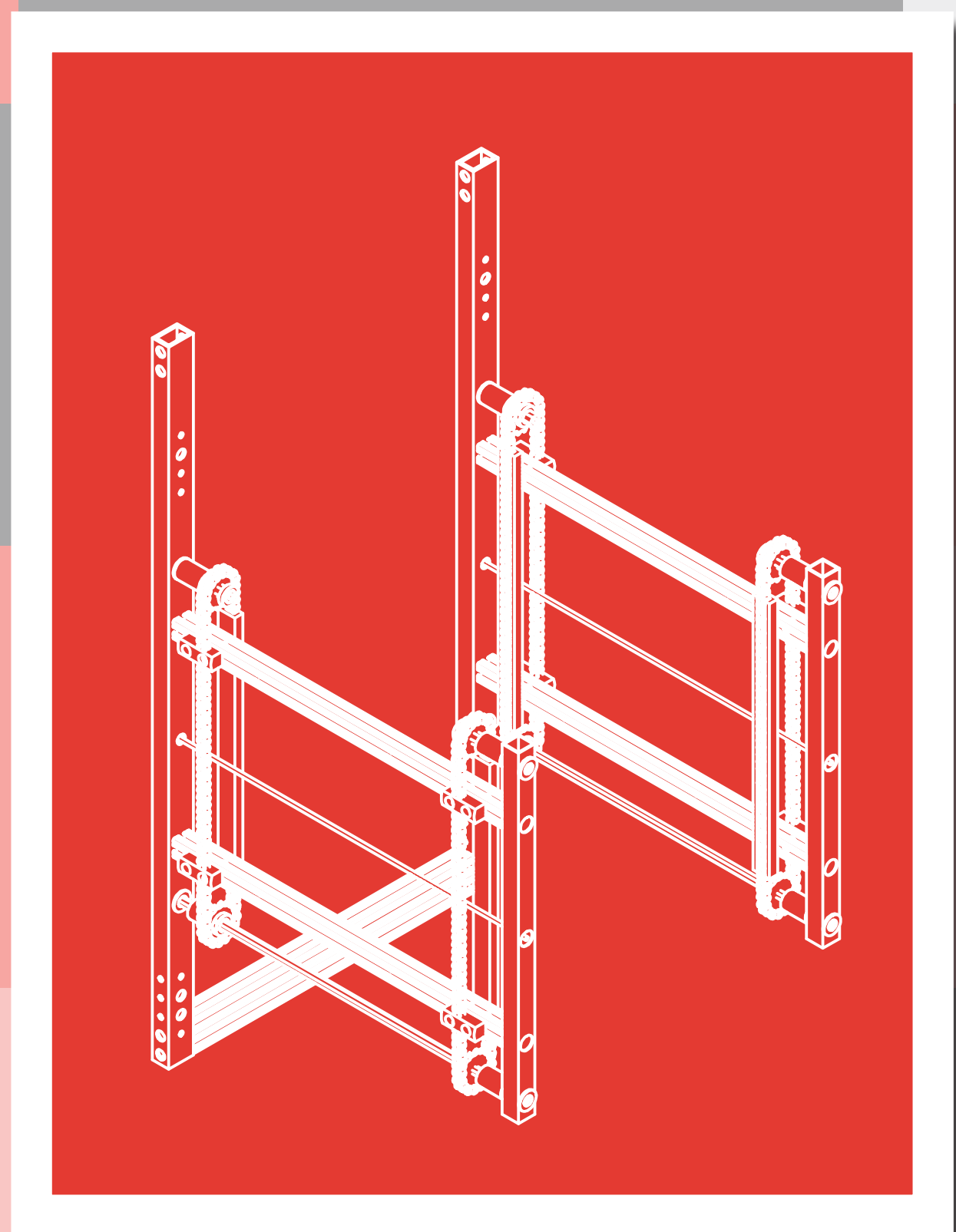
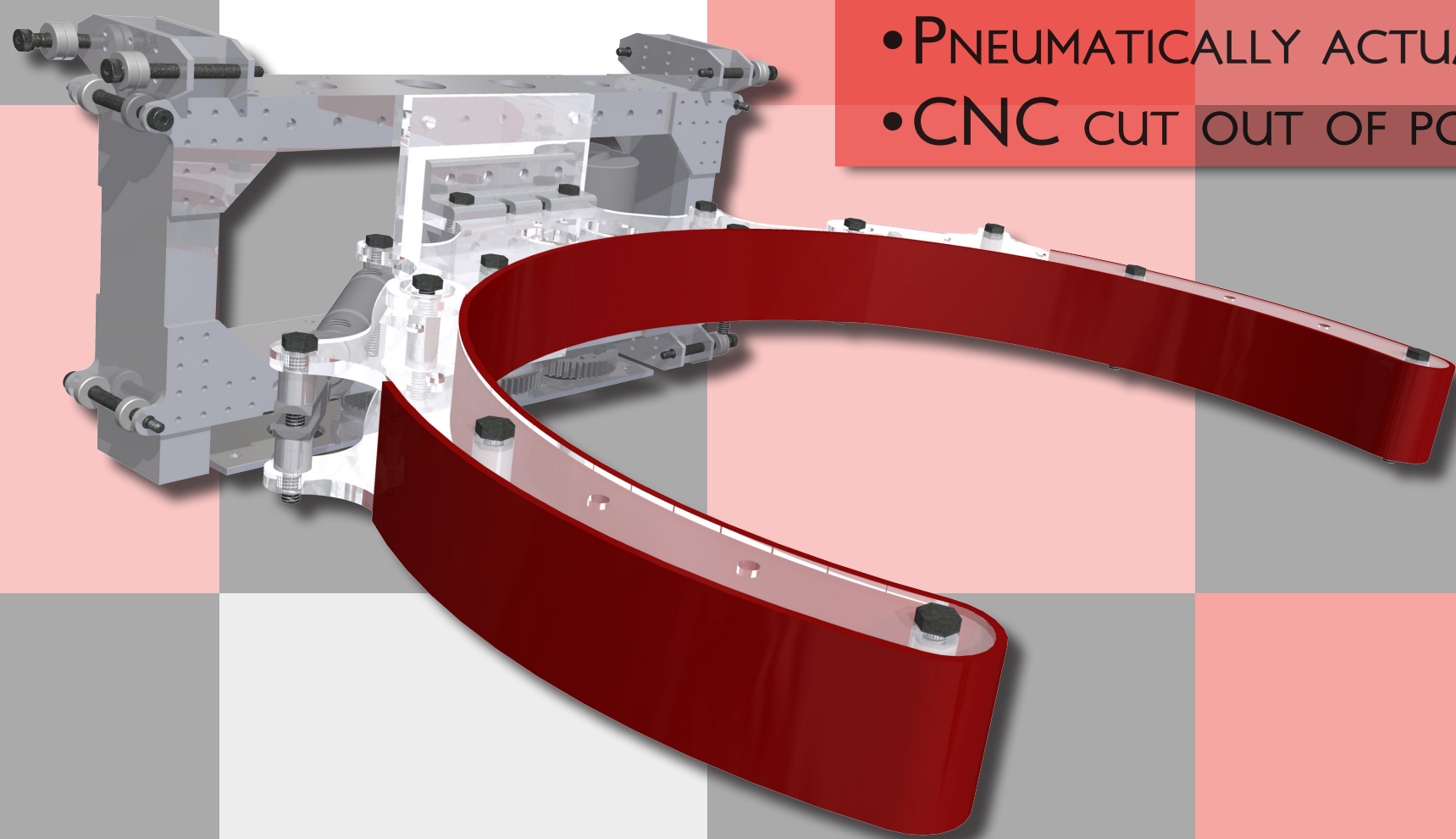


## LIFTER / ELEVATOR

- MINI CIM POWERED ACME SCREW SYSTEM
- CLAW MOUNTED TO CARRIAGE
- 6 FT OF TRAVEL
- QUICK CLAW ATTACHMENT

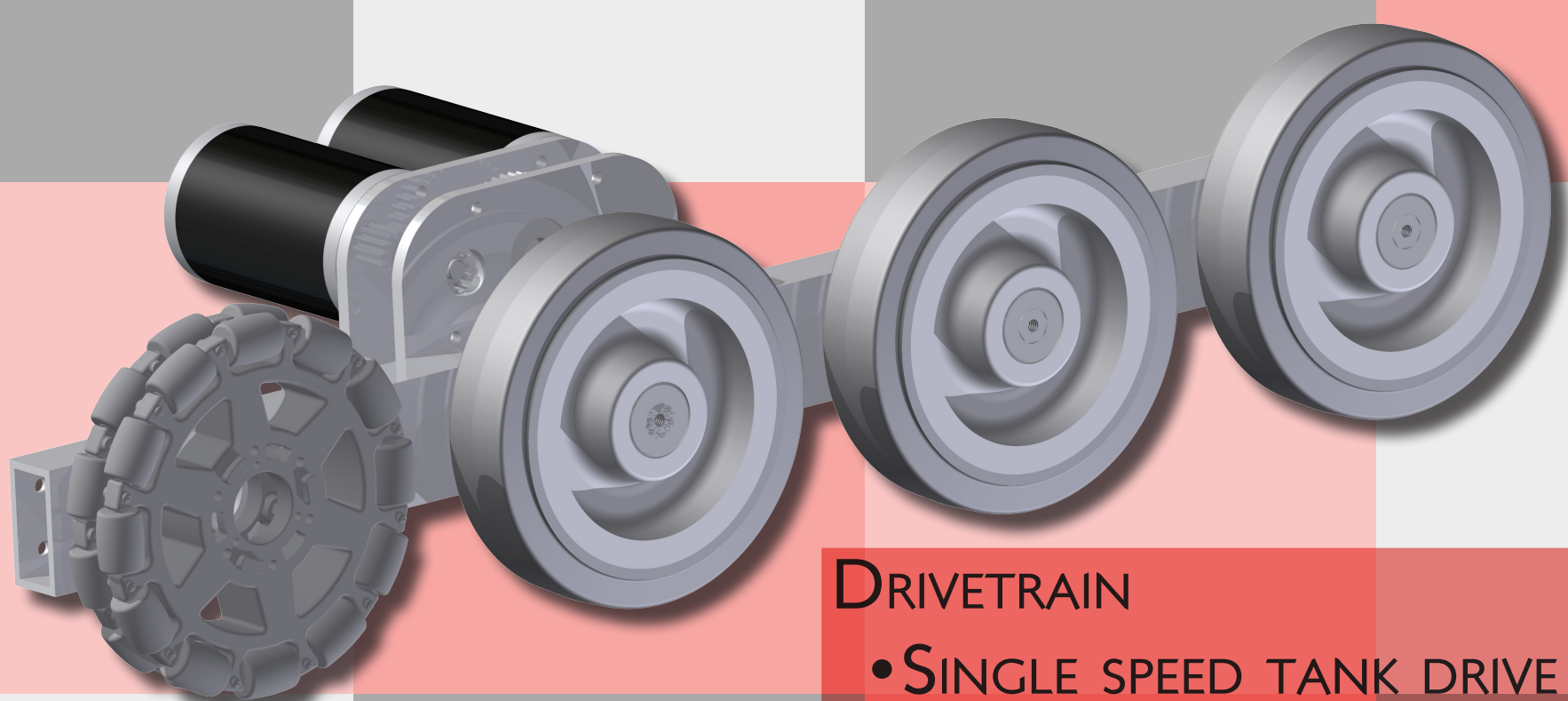
## CONTAINER CLAW

- PNEUMATICALLY ACTUATED PINCH CLAW
- CNC CUT OUT OF POLYCARBONATE



## TOTE STACKER

- CHAIN DRIVEN CONTINUOUS TOTE STACKER
- POWERED BY (2) PG27 MOTORS IN A CUSTOM GEARBOX
- LIFTING ARMS SPACED TO INDEX TOTES AND MINIMIZE DROP
- CANTILEVERED OVER FRAME TO DROP ON CENTER STEP



## DRIVETRAIN

- SINGLE SPEED TANK DRIVE
- 6 INCH WHEELS, (6) COLSON AND (2) OMNI
- CUSTOM 12:1 (2) CIM GEARBOXES
- CHAIN-IN-TUBE POWER TRANSMISSION